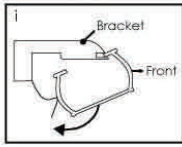
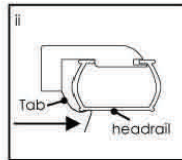


Step 3. Securing the headrail

ABS bracket

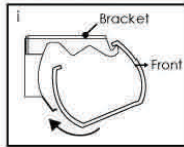


i. Lift the head rail into position so that the front edge of each bracket is sliding under the inner front edge of the headrail

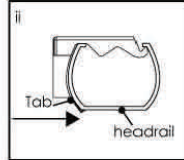


ii. Push the head rail upwards until the flexible tab at the bottom of each bracket snaps onto the back of the headrail

Metal bracket



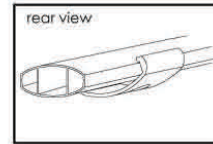
i. Lift the head rail into position so that the front edge of each bracket is sliding under the inner front edge of the headrail



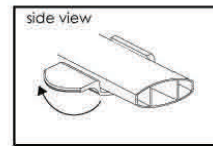
ii. Push the head rail upwards until the flexible tab at the bottom of each bracket snaps onto the back of the headrail

Note*: Make sure that the front side of the blind is facing toward the room & the back side of the blind with the support strips facing the window frame

Operating handle aids with lowering and raising shade without direct contact on the blind's bottom rail or head rail (for cordless top down/bottom up shade) which may leave fingerprint smudges. The operating handle not only helps keep the blind clean but increases the blind's aesthetic appearance



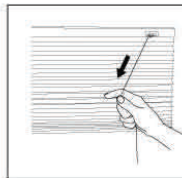
i. Locate the centre of the bottom rail. Gently lift the fabric out of the way. Fasten the top of the handle onto the middle backside of the bottom rail.



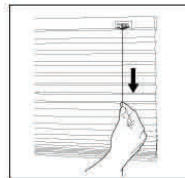
ii. Rotate the handle upward until it snaps into place.

Step 4. Operating the Blind

Blindsonline Standard Corded Blind

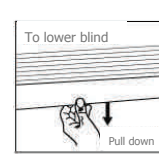


Disengage the cord lock by pulling the lift cord toward the centre of the blind to raise or lower blind

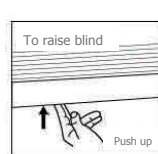


Raise or lower blind to desired position and let go. Cord lock will automatically engage.

Blindsonline Cordless Cellular Blind



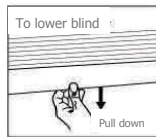
Lowering blind: Simply grasp the centre of the bottom rail and pull the shade down to desired position and release.



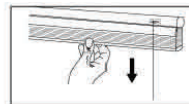
Raising blind: Simply grasp the centre of the bottom rail and push it upward to the desired position and release.

Blindsonline Semi Cordless Top-down / Bottom-up Blind

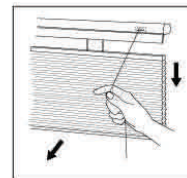
The blind has 2 different operating mechanisms. The cordless spring device controls the Bottom-up functions and the cord-retractable mechanism controls Top-down functions of the blind.



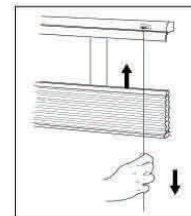
Lowering blind: Simply grasp the centre of the bottom rail and pull the blind down to desired position and release.



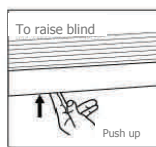
First lower the blind by pulling the blind down to desired position and release.



Disengage the cord lock by pulling the lift cord toward the centre of the blind to raise or lower blind



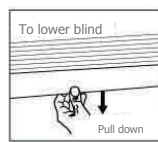
Raise or lower blind to desired position and let go. Cord lock will automatically engage.



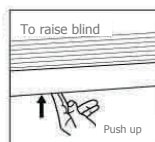
Raising blind: Simply grasp the centre of the bottom rail and push it upward to the desired position and release.

Blindsonline Cordless Top-down / Bottom-up Blind

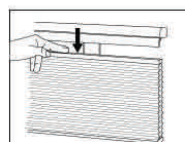
The blind has 2 different operating mechanisms. Both the Bottom-Up and Top-Down functions are operated by cordless spring mechanisms



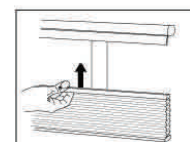
Lowering blind: Simply grasp the centre of the bottom rail and pull the blind down to desired position and release.



Raising blind: Simply grasp the centre of the bottom rail and push it upward to the desired position and release.



Lowering the headrail: Simply push down on the headrail to lower it to the desired position and release



Raising the headrail: Simply push up on the headrail to raise it to the desired position and release

Cleaning your Blind:

For best results, we suggest using a vacuum cleaner or dry cloth to remove dust. For spot-removal try using light damp cloth to gently wipe the spot clean. We highly recommend Chux Magic Erasers. Do not use any kind of chemical to clean the blind as it may dame the fabric.

If you have any further questions, please contact our Customer Service Team

Ph: 1300 761 179

Monday to Friday 9am - 5pm

Choose. Measure. Order. Install. Easy.