

Drapes

Installation. Easy.



Item Checklist

- Drapes
- Track
- Brackets
- Screws
- Child Safe cord tidy

Tools you will need

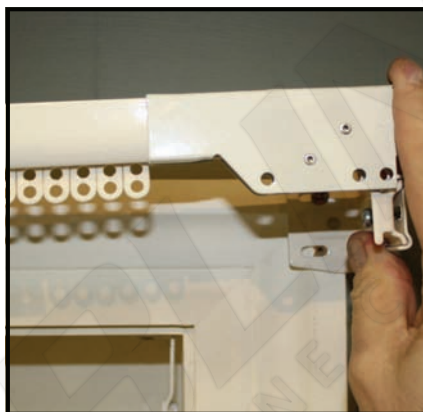
- Pencil
- Drill with Philips head bit
- Tape Measure

It's as Easy as 1,2,3



1

Attach Brackets



2

Attach Tracks



3

Hang Drapes

Step One - Mounting the Brackets

With most curtain tracks, the curtains are hung so the top of the curtain is about 12mm above the top of the track. The hooks will allow for this. So if you measured from the top of architrave to the floor, then this is what you should clear the floor by.

Start by laying the track under the window where it is to be mounted. Lay out the brackets along the track. There should be two brackets for the ends and for the middle depending on the size. The end brackets generally have a brass coloured tab on the ends. This allows the end of the track to hook into it.

The centre or intermediate brackets have a little swing tab on the ends. This locates into the top of the track and swings shut to hold the track in position.

On one way draw tracks there is only one end bracket for the pulley end and an extra intermediate or middle bracket which can be placed about 100mm in from the open end of the track.

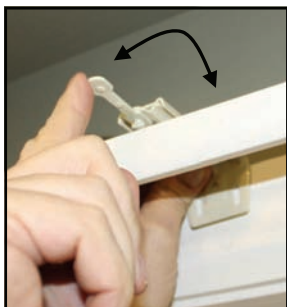
Once you have laid out the track and brackets, simply screw the middle brackets flush with the top of the architrave and if the track is only the width of the window then the ends can go flush with both the top and end of the architrave.

It is important that the proper brackets be fitted at the correct location.

Your brackets must be securely attached to the mounting surface. When screwing into a surface, the included screws must hit wood studs. Otherwise, use a secure fastener such as a hollow wall anchor for plaster mounts (not included)

Step Two - Attaching the Track

Simply clip the track into the brackets. Then lock the central support bracket into place by rotating the arm in line with the track. (not supplied to tracks under 1 metre width)



Central bracket.

Rotate the lever so it is parallel with the track to securely lock into place

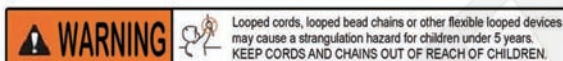
⚠ WARNING

Young children can strangle in the loop of pull cords, chain and bead cords, and cords that run through window coverings. They can also wrap cords around their necks. To avoid strangulation and entanglement, keep cords out of the reach of young children. Also,

1. Install safety devices that remove the cord loop or reduce access to cords, and
2. Move cots and furniture away from window covering cords.

The tension device reduces the hazards of strangulation or entanglement by limited access to the cord or bead chain.

Anchor the device with the cord or bead chain to the wall or floor so young children cannot pull the cord or bead chain around their necks. Always keep cords out of the reach of young children.



Secure the draw cords with the Child safe tidy by attaching the clear plastic hook as follows;

Architrave Mount -Secure into timber frame, do not have too much tension on the cords.

Plaster Mount -Secure into plaster, making sure to use a wall mate

(not included-see image below). Do not have too much tension on the cords, leave a small amount of slack

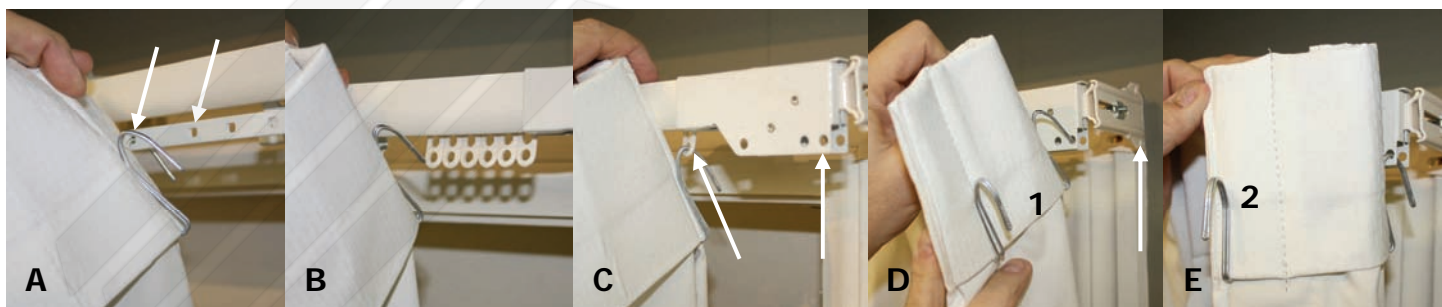


Wall mate required for plaster mount for cord tidy

Step Three - Hanging the Drapes

The drapes have been fan folded to train them into opening and closing correctly on the header tape. The stiffness of the fan fold will drop out over time and turn into soft folds. The time for this can vary on the type of fabric you have chosen, the temperature, and humidity of the room.

You are now ready to hang your curtains on the track. Start with the centre overlap and insert the first two hooks of one drape, in holes on the overlap carrier.



A Start with the centre overlap and insert the first two hooks as shown in the overlap carrier.

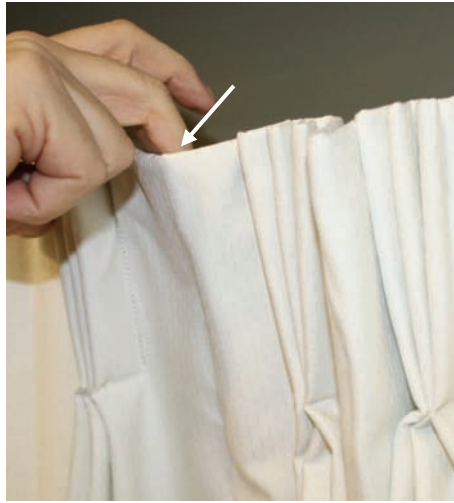
B Spacing in the selection of holes which give the flattest look for the drape. Proceed placing the hooks into the lower hole of each plastic runner on the track. Note you may have extra runners on your track that aren't required.

C & D When you get to the end pulley insert the last three hooks in the holes that are shown above.

E The final hook that forms the curtain return into the wall, needs to be unhooked from the drape and repositioned to the far end of the pocket prior to hooking into the track. View hook position above 1 & 2

Repeat steps A-E with other drape (you will only have one panel if it is a one way draw)

Dressing your Drapes



- You should slowly open and close your drape.
- As you open it, make sure that all the vertical crease between each pleat folds away from the curtain track.
- Simply pop your finger behind the top of the space and pull forward.
- Continue until the curtain is fully opened.
- Now just keep an eye on this point for the first couple of days to make sure they remain coming forward.
- Usually they are fine when you open the next morning but may need some tweaking to train them into place

The curtain may have a few wrinkles due to transporting; these will drop out and settle over time. If you have a steam appliance you may apply this to ease out the stubborn wrinkles or creases. Do not steam Moiré fabrics.

For further details please contact our customer service team
Monday to Friday 9am to 5pm